



Perth and Kinross
Health and Social
Care Partnership

Supporting
healthy and
independent
lives

Personalisation & Self Directed Support

Carers Conference

Dewars Centre
22 November 2018



Perth and Kinross Health and Social Care Partnership

*Your
Life
Your
Choice*



Personalisation



Perth and Kinross Health and Social Care Partnership

Personalisation is a social care approach described by the Department of Health as meaning that “every person who receives support, whether provided by statutory services or funded by themselves, will have choice and control over the shape of that support in all care settings”.



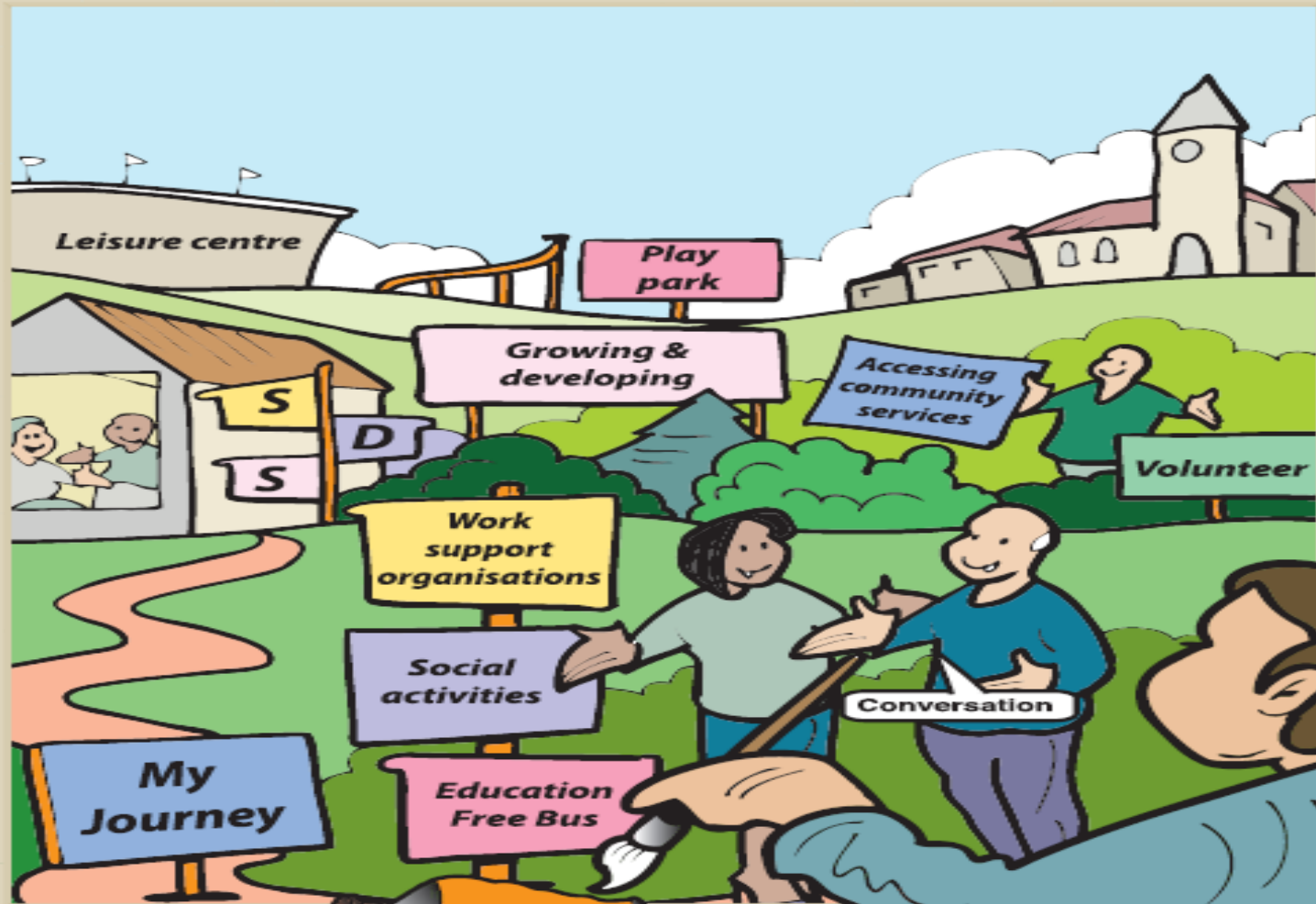
Conversation



Collaboration



My Journey • My Choice



The Carers (Scotland) Act 2016

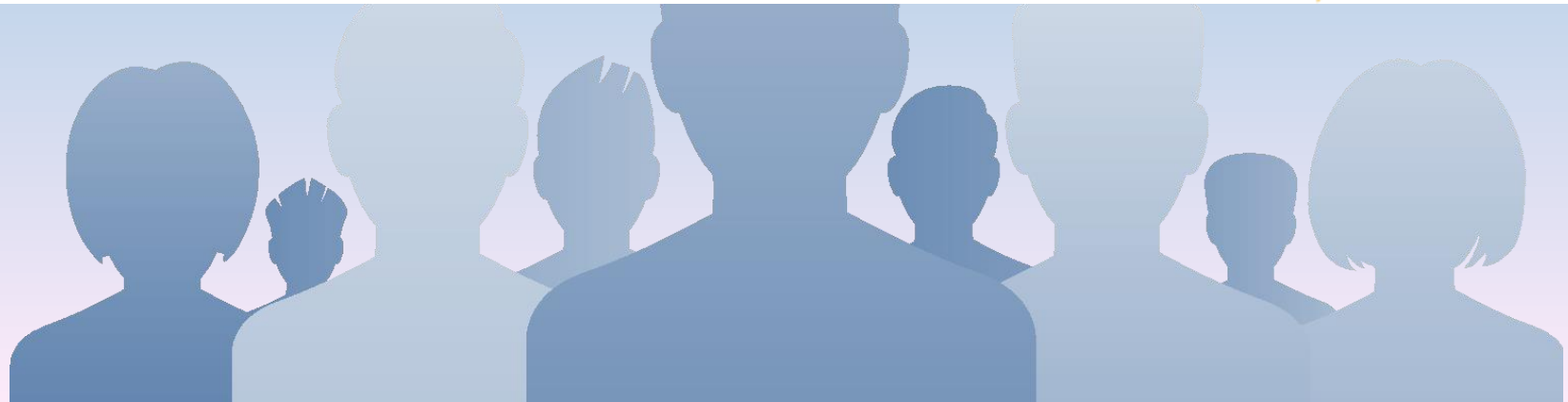
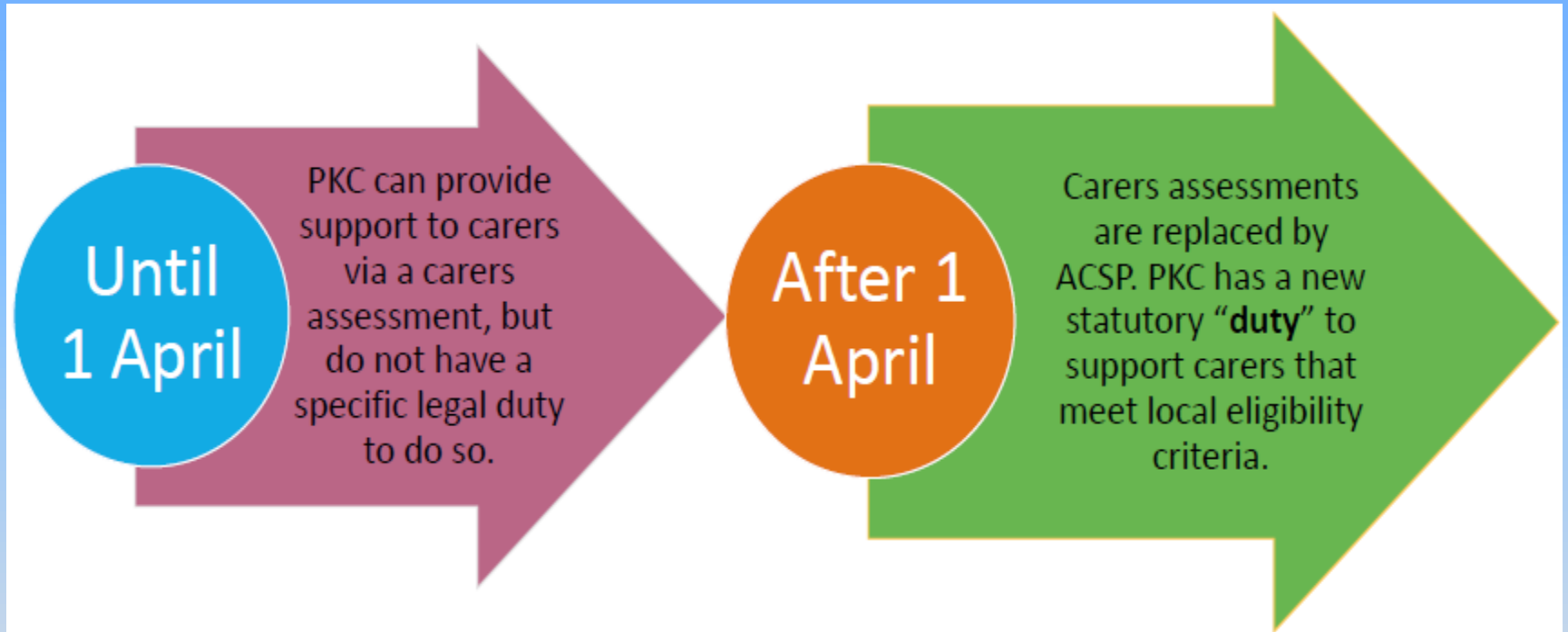


Do you support a parent, partner, child, sibling or friend as a result of their illness, condition or disability?

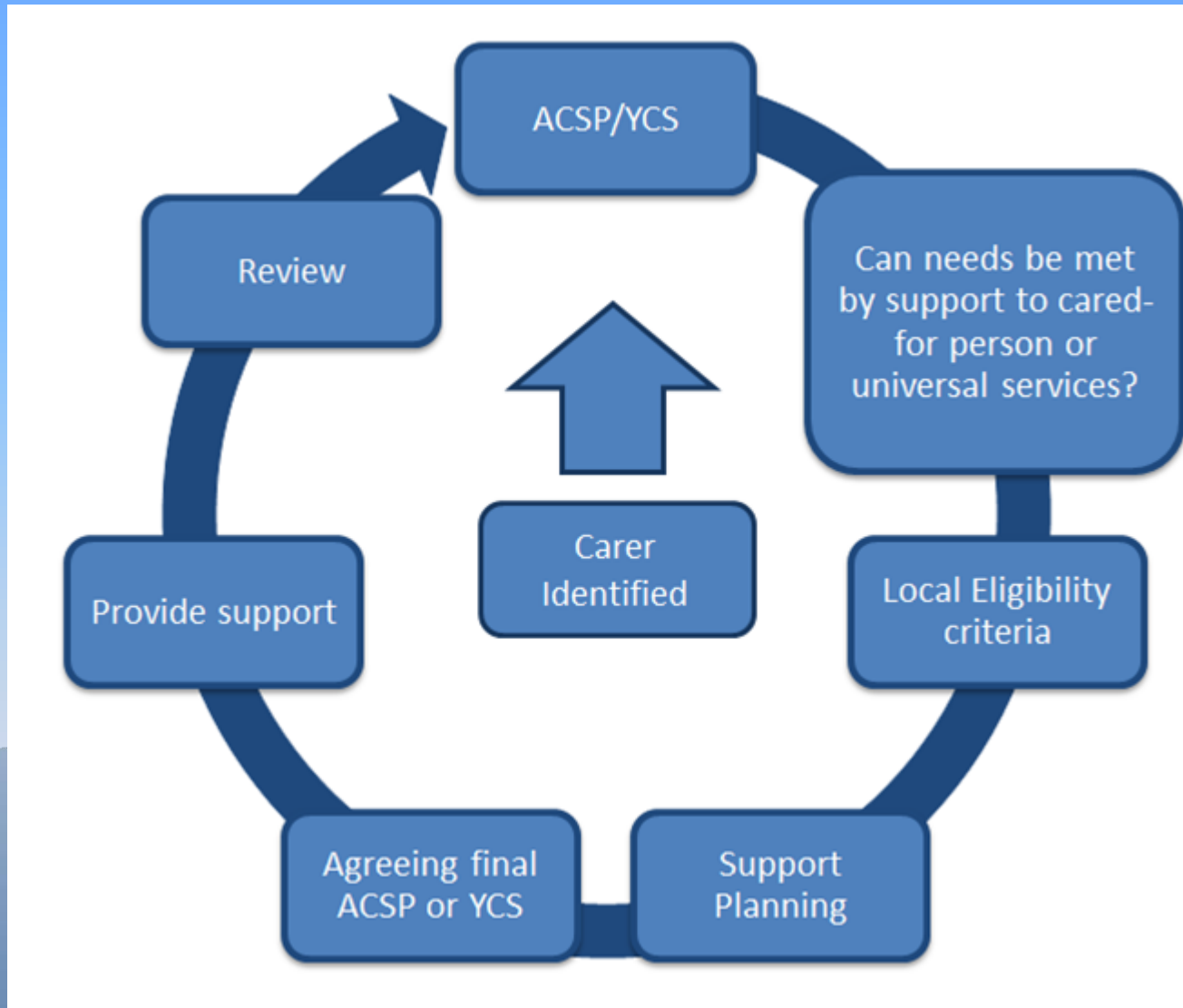
If so, you are an unpaid carer.



Perth and Kinross Health and Social Care Partnership

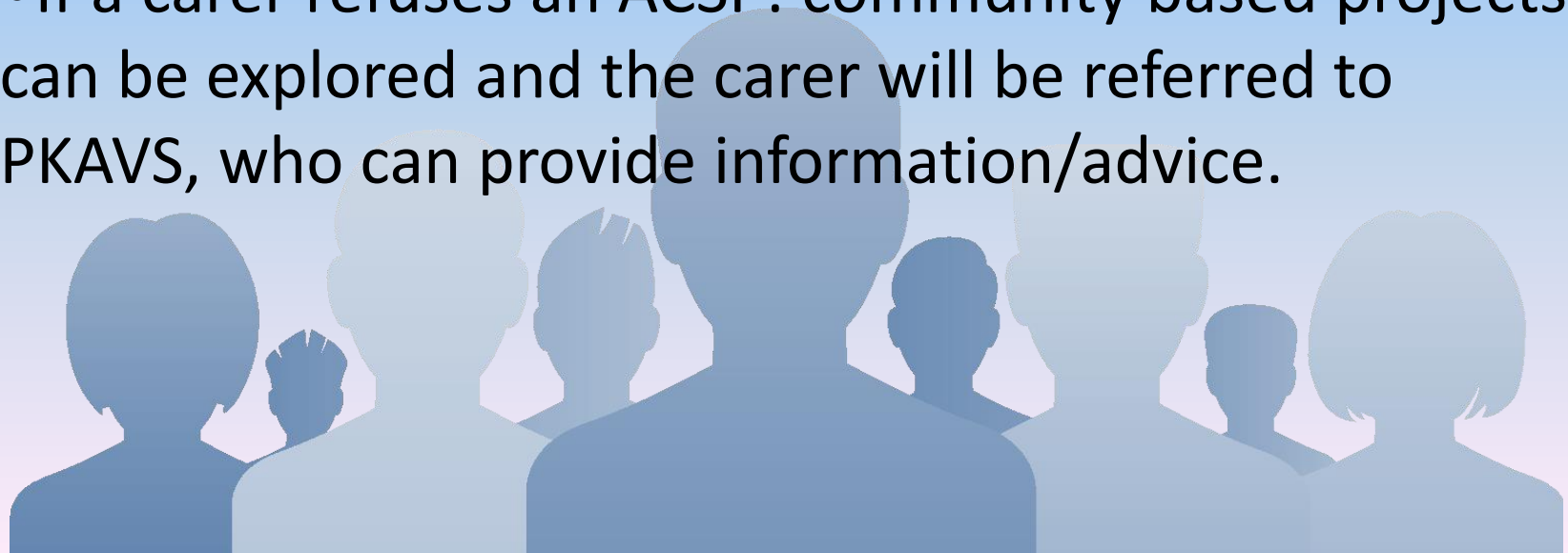


Perth and Kinross Health and Social Care Partnership



Adult Carer Support Plan (ACSP)

- Duty to offer or to prepare an ACSP
- If a carer accepts an ACSP: the Local Authority can provide support under statutory power/duty.
- If a carer refuses an ACSP: community based projects can be explored and the carer will be referred to PKAVS, who can provide information/advice.



Self-directed support (SDS) allows people to choose how their support is provided, and gives them as much control as they want.

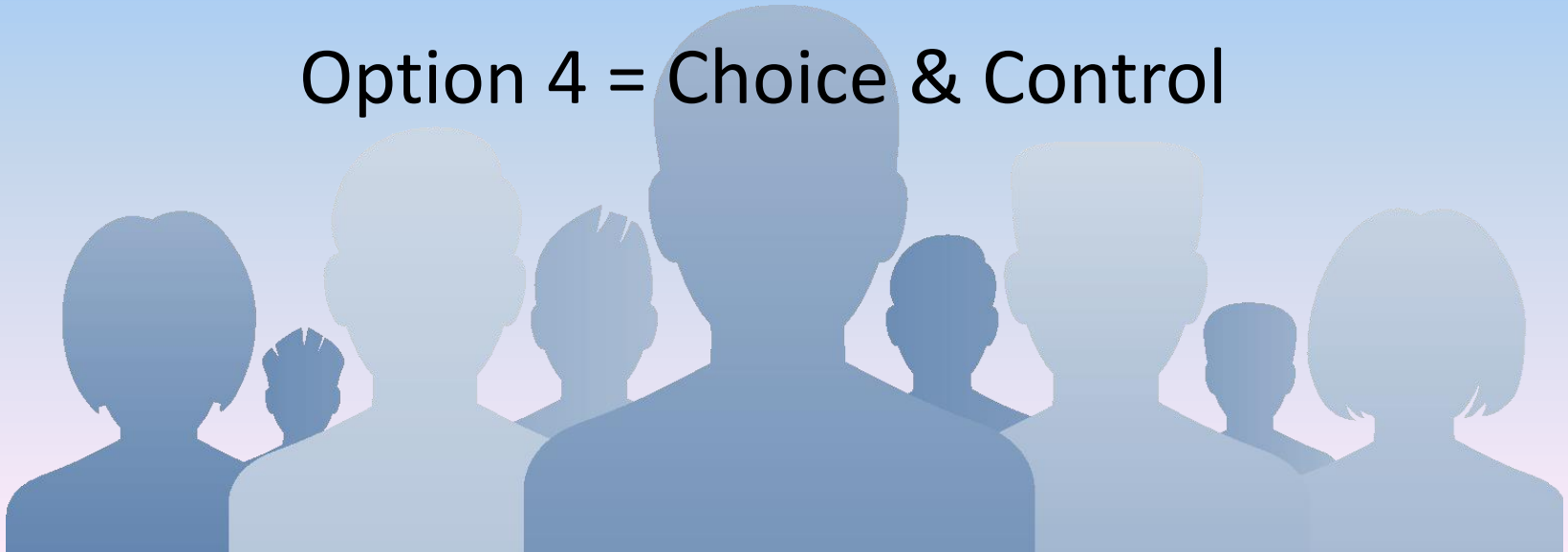


Option 1 = Choice & Control

Option 2 = Choice & Control

Option 3 = Choice & Control

Option 4 = Choice & Control





Self Directed Support Project



**Helping unpaid Carers to
understand Self Directed Support
and access community based
services**



Our project wants to ensure that:

- Carers know about and understand Self Directed Support.
- Carers feel more informed, listened to and less stressed about the process
- Carers are more prepared and confident to engage with Self Directed Support.





SUPPORT CHOICES

Independent information about **self-directed support**

Help to get social care and support in rural areas

Support Champions who will share information in local communities

SUPPORT CHOICES



- We work with people to develop strong inclusive communities
- Developing activities and services led by people in that community
- Trying out innovative approaches
- Linking up with other places
- Began in 2004, working across Scotland
- Also part of the Rural Wisdom project with people in Wales – includes Highland Perthshire



- We have delivered a Self Directed Support project in Highland Perthshire
- Helped create community enterprises – turning options into opportunities
- Strong rural community network
- Our support is flexible, creative and led by peoples experiences
- Understanding of Scotland-wide SDS Agenda